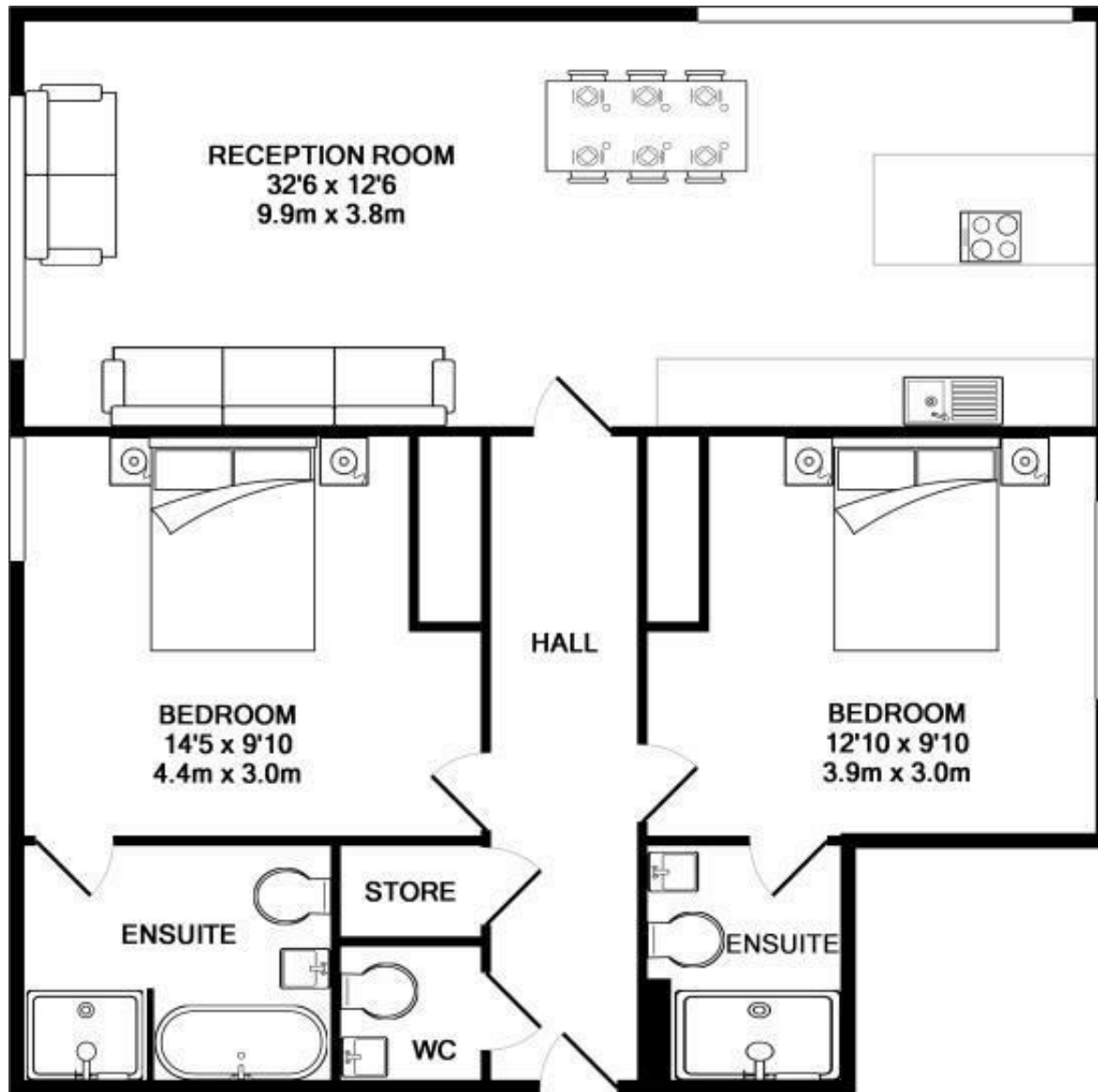


**Southside Apartments
183 Lower Richmond
Road
Richmond
TW9 4LN**

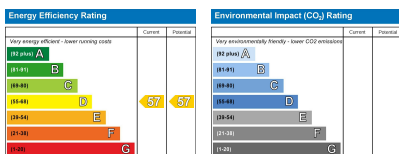
£575,000

ChaseBuchanan





Made with Metropix ©2016



- Viewings accompanied by Chase Buchanan
- Super, sleek, modern apartment in Richmond upon Thames
- 940 square feet with great entertaining space
- Master bedroom with en suite bathroom
- Gated parking
- Quality fixtures, fittings and integrated appliances
- Close to amenities and transport links
- Ideal first time purchase
- No onward chain
- Council Tax Band D

Boasting over 940 square feet of expansive space, a superb entertaining area and two generously proportioned bedrooms this apartment in Richmond upon Thames comes very highly recommended.

Featuring secure gated parking, lift service, high levels of sound insulation, walnut doors and double glazing, programmable lighting and a particularly stylish finish this small development has been re-designed by Quad Architects.

Of particular note this super flat is fitted with Siemens appliances to the kitchen and the luxury bathroom suites are complemented with quality sanitary ware.

The location of this apartment provides good access to Richmond town centre, whilst train and tube links from Mortlake, North Sheen and indeed Richmond make for good access to Waterloo and beyond.

Additionally, the road routes in and out of London are very easily accessible, with Kew retail park and the array of shops there in close proximity. For the sporting enthusiast, Dukes Meadows nearby is a great place for skiing, golf and tennis.

This property would make an ideal first time purchase.

For more information or to book a viewing, please contact:

020 8948 1331

ChaseBuchanan

20 Red Lion Street, Richmond, TW9 1RW

Care has been taken in the preparation of these particulars, however, their accuracy is not guaranteed and they do not form part of any contract. Measurements stated must be considered maximum.